



MNCD200NW Dash Cam



MNCD200NW User Manual

INTRODUCTION

Congratulations on purchasing your Minolta Camcorder! The contents of this manual are subject to change without notice. Note that the example screens and product illustrations shown in this User's Guide may differ somewhat from the screens and configuration of the actual camera. Please visit our website at www.minoltadigital.com for the latest updates.

This manual contains proprietary information protected by copyright. All rights are reserved. No part of this manual may be reproduced by any mechanical, electronic or other means, in any form, without prior written permission of Elite Brands Inc. © 2023.

The Minolta MNCD200NW Car Camcorder integrates multi-functions of 1080P HD video capture, high resolution photo capture and a compact form factor. It adopts video decoding technology of high performance and compression ratios to deliver excellent video quality. This camcorder is intended for in-vehicle shooting, which effectively enables the collection of evidence for driving accidents, daily life, traveling and outdoor activities. The Minolta MNCD200NW allows you to record video when mounted to your car's windshield in a wide, large angle.

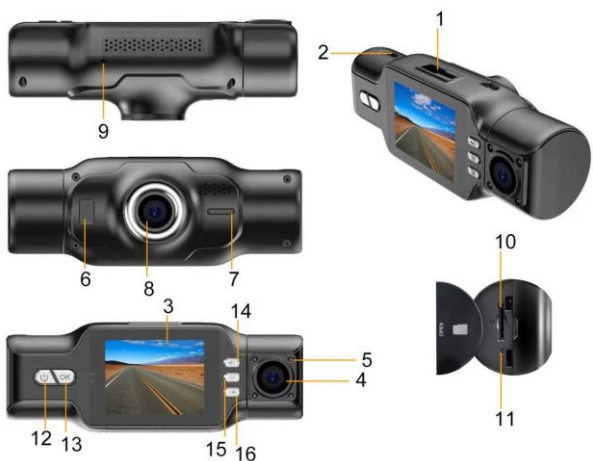
This quick guide explains how to use your camcorder and provides additional information, including precautions and technical specifications. Please read through it carefully and understand this quick guide before use. Keep it properly stored away for reference.

Safety and Handling Precautions

- Do not take apart or attempt to service the camcorder yourself.
- Do not expose the camcorder to moisture, or extreme temperatures.
- Allow the camera to warm up when moving from cold to warm temperatures.
- Do not touch and put pressure on the camera lens.
- Do not expose the lens to direct sunlight for extended periods.
- Do not use abrasive chemicals, cleaning solvents or strong detergents to clean the product. Wipe the product with a slightly damp soft cloth.
- When the camera is used for an extended period of time, it is normal for the camera body to feel warm.
- Do not subject the LCD monitor to impact.
- To prevent the risk of fire or electric shock, do not expose this appliance to rain or moisture.

1. GETTING STARTED

1.1 Overview



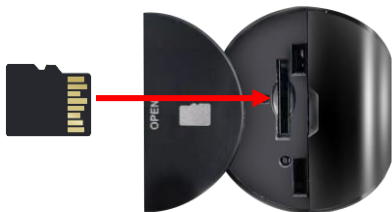
1	Windshield Mount Port	9	Microphone
2	USB Charging Port	10	Memory Card Slot
3	Display	11	Reset Pinhole
4	In-Car Camera Lens	12	Power Display On/Off
5	In-Car Camera IR LEDs	13	OK Record
6	LED Light	14	Left Display View
7	Speaker	15	Mode Menu
8	Lens	16	Right Record Audio On/Off

1.2 Button and Functions Explanation

Function	Description
Display	Shows the current view and menu, options and different statuses of each mode.
Power	Press and hold for 3 seconds to power on and off. Tap once while power is on to turn the LCD screen off, tap again to turn the LCD screen on.
Mode	Tap once to cycle between Video, Photo and Playback modes. Press and hold to access settings menus in each mode. During video recording, tap to lock the video, tap again to unlock the video.
Left Display View	Button used during menu navigation and playback use. Tap to change the view on the LCD Display. In Playback Mode: Press to rewind the video.
OK Record	OK button in menus. Record button in shooting modes.
Right Record Audio	Button used during menu navigation and playback use. Tap to turn audio recording on and off in video mode. In Playback Mode: Press to fast forward the video.
Microphone	Built-in microphone for audio capture during video recording.
USB Port	Power port and data transfer port for transferring media to your computer.
IR LEDs	IR LEDs to aid with night vision.
Windshield Mount	Mount used to connect the camcorder to your windshield.
Memory Card Slot	Storage slot for inserting your MicroSD memory card.
Speaker	Built-in speaker output for playback of video files when audio recording is enabled.
Lens	Front capture device for all video and photo.
Reset Button	Button for power cycling your camcorder if it freezes or becomes unresponsive

1.3 Memory Card Insertion and Removal

1. Ensure the camcorder is powered off.
2. Open the memory card door on the side of the camcorder by lifting up on the door using the small cutout.
3. Insert a MicroSD memory card into the MicroSD card slot with the gold pins facing the display screen. Do not force it through the MicroSD card into the slot as it can only be inserted in one direction. Once successfully inserted, it will click in.
4. To remove the MicroSD card, simply push the MicroSD card in and it will bounce back out of the slot.



Do not remove or insert the memory card when recording. Doing so may cause the card to become damaged or cause data loss.

1.4 Windshield Mount

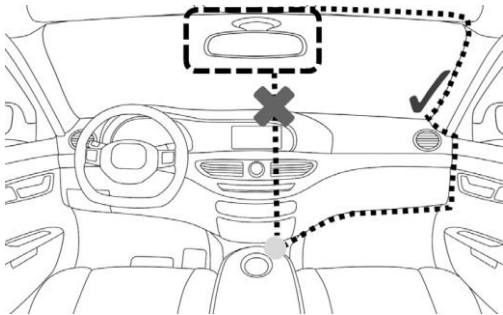
The windshield mount is included for mounting your camcorder to your windshield. Simply attach the smaller plastic end of the mount to the top of your camcorder. Apply the suction cup side to the top of your windshield. Then lift up on the lever that is attached to the suction cup to secure the suction cup to the windshield. Before applying to your windshield, make sure that your windshield is clean and free of any dirt or debris. Before removing the suction cup from the windshield, make sure to lower the lever.

NOTE: If the suction cup loses its grip over time, thoroughly clean the clear suction area with soap and water. After cleaning, allow it to dry for 2 hours and reapply it to your windshield.



1.5 Mounting the Camcorder

The camcorder should be mounted on the windshield of your vehicle in a location where it does not interfere with your view through the windshield. The optimal location is to the right of or directly below the rearview mirror. When mounting the camcorder, make sure to run the power cable so that the cable does not interfere with your view through the windshield. See the diagram below. You can tuck the USB cable into your car interior's headliner and molding.



NOTE: Consult with local state laws in your area before installing your camcorder. Certain restrictions and limitations may apply to the placement of objects on the windshield of your vehicle.

1.6 Startup

1.6.1 In-Car Use

Connect the included auxiliary DC power adaptor to your car's power port. Plug the USB plug into the camcorder's USB port. Charging will begin immediately. Please note that the camcorder's internal battery has a very limited capacity and is only intended for use in emergency use situations.

1.6.2 In-Car / Interior Camera

The camcorder comes with a second built-in camera. This camera is used to record the interior of your vehicle at the same time as the front camera is recording the road in front of you. Press the **RIGHT** button to change the view on the LCD screen to the in-car camera. Video files from the in-car camera are saved as separate files on the memory card. Simply rotate the in-car camera to change the view of the camera.

1.6.3 USB Cord / Computer Use

Connect the included USB cable to a free USB port on your computer, and connect the other end of the cable into the camcorder's USB port. The battery may be charged while the camcorder is powered on or off. The camcorder will automatically power on and show three different modes you can select from. The modes are 'Mass Storage', where you can access stored videos and images, 'PC Camera', where the camcorder will function like a web cam, and 'REC_mode', where the camera will function normally while connected to the computer's power. Use the **LEFT** or **RIGHT** buttons to select your desired mode and press the **OK/RECORD** button to enter that mode.

Your camcorder acts like a memory card reader when connected and your videos and photos stored on your camcorder memory can easily be accessed this way.

To access the files on your PC, go to *Start (or File Explorer) → This PC →* and find *Removable Disk*. Your media will be stored in a folder on this drive.

1.6.4 Using the IR Night Vision Mode

This camcorder has built-in infrared (IR) LEDs for night vision recording - giving you the ability to capture photos and videos in a dark environment.

The infrared LEDs automatically activate when the level of ambient light is low and will turn off when the level of ambient light is high.

Note:

Videos recorded in black and white cannot be changed to color.

1.6.5 Reset

If your camcorder freezes or becomes unresponsive, press the **RESET** button to reset and power cycle the camcorder. Insert a pointy object into the reset hole under the memory card door on the side of the camcorder to fully reset it. Refer to the Section 1 of the user manual's illustration.

1.6.6 Internal Supercapacitor

All dashcams get their power supply from the vehicle's ignition through a charging cable. However, dashcams also need a power backup to save files if power suddenly cuts out. For this purpose, dashcams either use an internal battery or a capacitor. Your MNCD200NW has a built-in capacitor for power backup. The main purpose of a dashcam's

internal power supply is meant for saving files only in case of power failure or emergency. Capacitors are more reliable than a lithium-ion battery due to the fact that they are more resistant to heat, extreme temperatures, harsher climates and do not fail after exceeding their charge cycles. Capacitors also do not pose many of the risk and care required of a lithium-ion battery product. If power suddenly cuts out from your vehicle, the internal supercapacitor will have enough power to save your files to the memory card and safely shutdown.

2. USING YOUR CAMCORDER

Quick Use Instructions

Simply insert the memory card into the card slot, and insert the auxiliary power adaptor into the camcorder's USB port and your car's power port. The camcorder will automatically power on and begin recording a video file.

To start or stop recording at any time, press the **OK/RECORD** button. You may also remove the auxiliary DC power adaptor at any time to automatically save a recording and power the camcorder off. Just mount it to your windshield, plug in the power and drive!

3. CAMCORDER OPERATION

Once you have inserted the MicroSD memory card and plugged your camcorder into a power source, your camcorder will automatically power on and begin recording. Press the **OK/RECORD** button to stop recording. You may also manually power your camcorder on or off by pressing the **POWER** button for 3 seconds.

There are 3 operation modes available for use. To cycle through the different modes, simply press the **MODE** button. Your camcorder's screen will show the current mode in the display's upper left corner. **Modes cannot change while a video is being recorded. The recording must stop first before changing to another mode.**

3.1 Video Capture Mode

Once your camcorder powers on, it will default to Video Mode and will begin recording automatically. To start or stop recording at any time, press the **OK/RECORD** button. Press the **RIGHT** button to change the view of the rear camera.

3.2 Photo Capture Mode

To capture a photo, enter PHOTO Mode by pressing the **MODE** button until a camera icon is shown in the upper left corner of the screen. Press the **OK/RECORD** button to instantly capture a photo.

3.3 Playback Mode

To review your video and photo files, enter PLAYBACK Mode. Press the **MODE** button until a previously captured file is shown on the screen. The most recent file captured will be displayed first.

1. Press the **LEFT** or **RIGHT** buttons to cycle through available playback files of photos and videos.
2. To delete a file or to protect a file from deletion, press and hold the **MODE** button to access the Playback mode settings.
3. Press the **MODE** button again to exit PLAYBACK mode.

Playing Back Video Clips

1. Press the **OK/RECORD** button to play or pause a video clip in PLAYBACK mode.
2. To delete a file or to protect a file from deletion, press and hold the **MODE** button to access the menus.

3.4 Main Screen and Icons Explanation

VIDEO MODE



1. **VIDEO** Mode
2. Collision Sensitivity
3. Video Resolution
4. Recording Time Remaining
5. Memory Card Inserted
6. Dashcam connected to power
7. Current Date
8. Current Time
9. Audio Recording Active
10. Exposure Value

PHOTO MODE



1. **PHOTO** Mode
2. Photo Resolution
3. Number of Pictures Remaining
4. Memory Card Inserted
5. Dashcam connected to power
6. Current Date
7. Current Time
8. Photo Quality
9. ISO
10. White Balance

4. MENU & SETTINGS INTERFACE

4.1 Video Mode Settings

Overview

Your camcorder comes preset with some user-adjustable settings to fine tune and customize how you would like your videos to be captured. The settings are already optimized and preset for the easiest experience.

While recording, press the **MODE** button to lock the file, and prevent it from being deleted in **PLAYBACK** mode. Press the **MODE** button again while recording to unlock the file.

NOTE: The settings menu cannot be accessed while the camcorder is recording a video file. If the camcorder is recording a file, you must stop recording before the settings menu can be accessed. To stop recording at any time, press the **OK** button.

4.1.1 Video Resolution

Your camcorder has a number of preset resolution and frames per second rates. A higher resolution will produce a higher quality and larger video file.

1. In **VIDEO** mode, press and hold the **MODE** button.
2. Select '*Video Resolution*' by using the **LEFT** or **RIGHT** buttons. Press the **OK/RECORD** button to enter the '*Video Resolution*' submenu.
3. Press the **LEFT** or **RIGHT** buttons to navigate the submenu and select a setting. You can select from *1080P* (highest quality), *720P* (higher quality) and *VGA* (lowest quality).
4. Press the **OK/RECORD** button to confirm your selected setting.
5. Press the **MODE** button to exit the submenu without making a selection.

4.1.2 Loop Recording

This setting allows you to set a maximum duration for each video clip recorded. Once you select an option, your camcorder will record video clips in this time interval only. Once your selected duration recording time is reached, the camcorder will end the recording and begin recording a new video file seamlessly.

1. In **VIDEO** mode, press and hold the **MODE** button.
2. Select '*Loop Recording*' by using the **LEFT** or **RIGHT** buttons. Press the **OK/RECORD** button to enter the '*Loop Recording*' submenu.
3. Press the **LEFT** or **RIGHT** buttons to navigate the submenu and select a setting. You can select from *Off*, *1 Minute*, *3 Minutes* and *5 Minutes*.
4. Press the **OK/RECORD** button to confirm your selected setting.
5. Press the **MODE** button to exit the submenu without making a selection.

4.1.3 Wide Dynamic Range

This setting allows you to turn Wide Dynamic Range on and off. WDR improves the range of color and contrast in a digital image and video

1. In VIDEO mode, press and hold the **MODE** button.
2. Select '*Wide Dynamic Range*' by using the **LEFT** or **RIGHT** buttons. Press the **OK/RECORD** button to enter the '*Wide Dynamic Range*' submenu.
3. Press the **LEFT** or **RIGHT** buttons to navigate the submenu and select a setting. You can select from *Off, On*.
4. Press the **OK/RECORD** button to confirm your selected setting.
5. Press the **MODE** button to exit the submenu without making a selection.

4.1.4 Exposure

This function adjusts the frame brightness in your video.

1. In VIDEO mode, press and hold the **MODE** button.
2. Select '*Exposure*' by using the **LEFT** or **RIGHT** buttons. Press the **OK/RECORD** button to enter the '*Exposure*' submenu.
3. Press the **LEFT** or **RIGHT** buttons to navigate the submenu and select a setting. You can select from *+3, +2, +1, 0, -1, -2, and -3*.
4. Press the **OK/RECORD** button to confirm your selected setting.
5. Press the **MODE** button to exit the submenu without making a selection.

4.1.5 Motion Detection

This setting automatically begins recording if movement is detected in front of the camcorder lens. Once recording, the camcorder will stop recording if not further movement is detected within a 20-second period of the last movement registered. You may also manually stop recording anytime by pressing the **OK** button during a recording. Motion Detection is active when the feature is turned on and the camcorder is powered on. The feature will not function with the camcorder powered off.

1. In VIDEO mode, press and hold the **MODE** button.
2. Select '*Motion Detection*' by using the **LEFT** or **RIGHT** buttons. Press the **OK/RECORD** button to enter the '*Motion Detection*' submenu.
3. Press the **LEFT** or **RIGHT** buttons again to navigate the submenu, and select a setting. You can select from *Off* and *On*.
4. Press the **OK/RECORD** button to confirm your selected setting.
5. Press the **MODE** button to exit the submenu without making a selection.

4.1.6 Audio Recording

This setting allows you to set the built-in microphone ON or OFF during a video recording. Once you select an option, your camcorder will either record audio within the video file, or record a video file without audio captured.

1. In VIDEO mode, press and hold the **MODE** button.
2. Select '*Audio Recording*' by using the **LEFT** or **RIGHT** buttons. Press the **OK/RECORD** button to enter the '*Audio Recording*' submenu.
3. Press the **LEFT** or **RIGHT** buttons to navigate the submenu and select a setting. You can select from *Off* and *On*.
4. Press the **OK/RECORD** button to confirm your selected setting.
5. Press the **MODE** button to exit the submenu without making a selection.

4.1.7 Date Stamp

This setting allows you to imprint a date & time onto your recorded video files. Once a video file is recorded with the imprint, the imprint cannot be removed.

1. In VIDEO mode, press and hold the **MODE** button.
2. Select '*Date Stamp*' by using the **LEFT** or **RIGHT** buttons. Press the **OK/RECORD** button to enter the '*Date Stamp*' submenu.
3. Press the **LEFT** or **RIGHT** buttons to navigate the submenu and select a setting. You can select from *Off* and *On*.
4. Press the **OK/RECORD** button to confirm your selected setting.
5. Press the **MODE** button to exit the submenu without making a selection.

4.1.8 Collision Sensitivity

This setting allows you to set the sensitivity level for automatic recording upon collision. When triggered or when the camcorder thinks a collision occurred, it will automatically begin recording and the recording will be stored with a lock icon. The video file will be locked and protected from deletion.

1. In VIDEO mode, press and hold the **MODE** button.
2. Select '*Collision Sensitivity*' by using the **LEFT** or **RIGHT** buttons. Press the **OK/RECORD** button to enter the '*Collision Sensitivity*' submenu.
3. Press the **LEFT** or **RIGHT** buttons to navigate the submenu and select a setting. You can select from *Off*, *Low*, *Medium* and *High*.
4. Press the **OK/RECORD** button to confirm your selected setting.
5. Press the **MODE** button to exit the submenu without making a selection.

4.1.9 Headlight Warning

This function will alert you if you forget to turn on your car's headlights in a dark environment.

1. In VIDEO mode, press and hold the **MODE** button.
2. Select '*Headlight Warning*' by using the **LEFT** or **RIGHT** buttons. Press the **OK/RECORD** button to enter the '*Headlight Warning*' submenu.

3. Press the **LEFT** or **RIGHT** buttons to navigate the submenu and select a setting. You can select from *Off* and *On*.
4. Press the **OK/RECORD** button to confirm your selected setting.
5. Press the **MODE** button to exit the submenu without making a selection.

Note: Do not rely solely on the camcorder to alert you if your car headlights are off.

4.1.10 Night Vision

This setting controls the IR LED lights for your camcorder.

1. In VIDEO mode, press and hold the **MODE** button.
2. Select '*Night Vision*' by using the **LEFT** or **RIGHT** buttons. Press the **OK/RECORD** button to enter the '*Night Vision*' submenu.
3. Press the **LEFT** or **RIGHT** buttons again to navigate the submenu and select a setting. You can select from *Off*, *On* and *Auto*.
4. Press the **OK/RECORD** button to confirm your selected setting.
5. Press the **MODE** button to exit the submenu without making a selection.

4.2 Photo Mode Settings

Overview

Your camcorder comes preset with some user-adjustable settings to fine tune and customize how you would like your videos to be captured. The settings are already optimized and preset for the easiest experience.

NOTE: The settings menu cannot be accessed while the camcorder is recording a video file. If the camcorder is recording a file, you must stop recording before the settings menu can be accessed. To stop recording at any time, press the **OK/RECORD** button.

4.2.1 Photo Resolution

Your camcorder has a number of preset photo resolution sizes. A higher resolution will produce a higher quality and larger file size photo.

1. In PHOTO mode, press and hold the **MODE** button.
2. Select '*Photo Resolution*' by using the **LEFT** or **RIGHT** buttons. Press the **OK/RECORD** button to enter the '*Photo Resolution*' submenu.
3. Press the **LEFT** or **RIGHT** buttons to navigate the submenu and select a setting. You can select from *VGA* (lowest quality), *1 Mega Pixel*, *2 Mega Pixels*, *3 Mega Pixels*, *5 Mega Pixels*, *8 Mega Pixels*, *10 Mega Pixels* and *12 Mega Pixels* (highest quality).
4. Press the **OK/RECORD** button to confirm your selected setting.
5. Press the **MODE** button to exit the submenu without making a selection.

4.2.2 Photo Quality

This setting determines the level of compression the camera uses when saving photos to your memory card. A high level of compression will produce a lower quality photo, and will also use less space when saving your photos.

1. In PHOTO mode, press and hold the **MODE** button.
2. Select '*Photo Quality*' by using the **LEFT** or **RIGHT** buttons. Press the **OK/RECORD** button to enter the '*Photo Quality*' submenu.
3. Press the **LEFT** or **RIGHT** buttons to navigate the submenu, and select a setting. You can select from *Fine* (high quality, low compression), *Normal* (medium quality, medium compression), and *Economy* (low quality, high compression).
4. Press the **OK/RECORD** button to confirm your selected setting.
5. Press the **MODE** button to exit the submenu without making a selection.

4.2.3 Photo Sharpness

This setting determines the visible detail of the photos being captured.

1. In PHOTO mode, press and hold the **MODE** button.

2. Select '*Sharpness*' by using the **LEFT** or **RIGHT** buttons. Press the **OK/RECORD** button to enter the '*Sharpness*' submenu.
3. Press the **LEFT** or **RIGHT** buttons to navigate the submenu, and select a setting. You can select from *Strong* (sharp, saturated photo), *Normal* (medium sharpness), and *Soft* (soft, duller photo).
4. Press the **OK/RECORD** button to confirm your selected setting.
5. Press the **MODE** button to exit the submenu without making a selection.

4.2.4 White Balance

This setting determines the color of light present in your photos. It can make scenes seem warmer or cooler in lighting depending on how the scene you're shooting in affects the frame.

1. In PHOTO mode, press and hold the **MODE** button.
2. Select '*White Balance*' by using the **LEFT** or **RIGHT** buttons. Press the **OK/RECORD** button to enter the '*White Balance*' submenu.
3. Press the **LEFT** or **RIGHT** buttons again to navigate the submenu, and select a setting. You can select from *Auto*, *Daylight*, *Cloudy*, *Tungsten*, and *Fluorescent*.
4. Press the **OK/RECORD** button to confirm your selected setting.
5. Press the **MODE** button to exit the submenu without making a selection.

4.2.5 Color

This function sets the color filter effect of a photograph.

1. In PHOTO mode, press and hold the **MODE** button.
2. Select '*Color*' by using the **LEFT** or **RIGHT** buttons. Press the **OK/RECORD** button to enter the '*Color*' submenu.
3. Press the **LEFT** or **RIGHT** buttons again to navigate the submenu, and select a setting. You can select from *Normal*, *Black and White* and *Sepia*.
4. Press the **OK/RECORD** button to confirm your selected setting.
5. Press the **MODE** button to exit the submenu without making a selection.

4.2.6 ISO

This setting determines the light sensitivity in the photos being captured.

1. In PHOTO mode, press and hold the **MODE** button.
2. Select '*ISO*' by using the **LEFT** or **RIGHT** buttons. Press the **OK/RECORD** button to enter the '*ISO*' submenu.
3. Press the **LEFT** or **RIGHT** buttons again to navigate the submenu, and select a setting. You can select from *Auto*, *100*, *200*, and *400*.

4. Press the **OK/RECORD** button to confirm your selected setting.
5. Press the **MODE** button to exit the submenu without making a selection.

4.2.7 Exposure

This function adjusts the frame brightness in your photograph.

1. In PHOTO mode, press and hold the **MODE** button.
2. Select '*Exposure*' by using the **LEFT** or **RIGHT** buttons. Press the **OK/RECORD** button to enter the '*Exposure*' submenu.
3. Press the **LEFT** or **RIGHT** buttons again to navigate the submenu, and select a setting. You can select from *+3, +2, +1, 0, -1, -2, and -3*.
4. Press the **OK/RECORD** button to confirm your selected setting.
5. Press the **MODE** button to exit the submenu without making a selection.

4.2.8 Quick Review

This setting allows you to review the photo after it's taken before returning back to Photo Mode.

1. In PHOTO mode, press and hold the **MODE** button.
2. Select '*Quick Review*' by using the **LEFT** or **RIGHT** buttons. Press the **OK/RECORD** button to enter the '*Quick Review*' submenu.
3. Press the **LEFT** or **RIGHT** buttons again to navigate the submenu, and select a setting. You can select from *Off, 2 Seconds and 5 Seconds*.
4. Press the **OK/RECORD** button to confirm your selected setting.
5. Press the **MODE** button to exit the submenu without making a selection.

4.2.9 Date Stamp

This setting allows you to imprint a date & time onto your captured images. Once an image is captured with the imprint, the imprint cannot be removed.

1. In PHOTO mode, press and hold the **MODE** button.
2. Select '*Date Stamp*' by using the **LEFT** or **RIGHT** buttons. Press the **OK/RECORD** button to enter the '*Date Stamp*' submenu.
3. Press the **LEFT** or **RIGHT** buttons again to navigate the submenu, and select a setting. You can select from *Off and On*.
4. Press the **OK/RECORD** button to confirm your selected setting.
5. Press the **MODE** button to exit the submenu without making a selection.

4.3 Setup Mode

Overview

The Setup Mode can be accessed while in the PHOTO or VIDEO modes. From the main screen, press and hold the **MODE** button, then press the **MODE** button again.

*NOTE: The settings menu cannot be accessed while the camcorder is recording a video file. If the camcorder is recording a file, you must stop recording before the settings menu can be accessed. To stop recording at any time, press the **OK/RECORD** button.*

4.3.1 Screen Saver

This setting allows you to set the length of time before the LCD Screen turns off automatically if the camcorder does not receive any input in the form of pressing a button.

1. In VIDEO or PHOTO modes, press and hold the **MODE** button to access the settings menu. Then press the **MODE** button again to access Setup mode.
2. Select 'Screen Saver' by using the **LEFT** or **RIGHT** buttons. Press the **OK/RECORD** button to enter the 'Screen Saver' submenu.
3. Press the **LEFT** or **RIGHT** buttons again to navigate the submenu and select a setting. You can select from *Off*, *30 Seconds*, *1 Minute* and *2 Minutes*.
4. Press the **OK/RECORD** button to confirm your selected setting.
5. After the selected amount of time without input the camcorder LCD screen will power off.
6. Press the **MODE** button to exit the submenu without making a selection.

4.3.2 Auto Power Off

This setting allows you to set the length of time before the camcorder powers off automatically if the camcorder does not receive any input such as pressing a button or recording.

1. In VIDEO or PHOTO modes, press and hold the **MODE** button to access the settings menu. Then press the **MODE** button again to access the Setup mode settings.
2. Select 'Auto Power Off' by using the **LEFT** or **RIGHT** buttons. Press the **OK/RECORD** button to enter the 'Auto Power Off' submenu.
3. Press the **LEFT** or **RIGHT** buttons again to navigate the submenu and select a setting. You can select from *Off*, *3 Minutes*, *5 Minutes* and *10 Minutes*.
4. Press the **OK/RECORD** button to confirm your selected setting.
5. After the selected amount of time, without any input, the camcorder will power off.
6. Press the **MODE** button to exit the submenu without making a selection.

4.3.3 Frequency

This setting allows you to set the power frequency of your camcorder. This setting is dependent on the region that the camcorder is being used in.

1. In VIDEO or PHOTO modes, press and hold the **MODE** button to access the settings menu. Then press the **MODE** button again to access the Setup mode settings.
2. Select '*Frequency*' by using the **LEFT** or **RIGHT** buttons. Press the **OK/RECORD** button to enter the '*Frequency*' submenu.
3. Press the **LEFT** or **RIGHT** buttons again to navigate the submenu and select a setting. You can select from 50Hz and 60Hz. The default frequency for the United States is 60Hz.
4. Press the **OK/RECORD** button to confirm your selected setting.
5. Press the **MODE** button to exit the submenu without making a selection.

4.3.4 Beep Sound

This setting allows you to enable or disable the sound when pressing a button.

1. In VIDEO or PHOTO modes, press and hold the **MODE** button to access the settings menu. Then press the **MODE** button again to access the Setup mode settings.
2. Select '*Beep Sound*' by using the **LEFT** or **RIGHT** buttons. Press the **OK/RECORD** button to enter the '*Beep Sound*' submenu.
3. Press the **LEFT** or **RIGHT** buttons again to navigate the submenu and select a setting. You can select from *Off* and *On*.
4. Press the **OK/RECORD** button to confirm your selected setting
5. Press the **MODE** button to exit the submenu without making a selection.

4.3.5 Language

This setting allows you to set the language for your camcorder's menus.

1. In VIDEO or PHOTO modes, press and hold the **MODE** button to access the settings menu. Then press the **MODE** button again to access the Setup mode settings.
2. Select '*Language*' by using the **LEFT** or **RIGHT** buttons. Press the **OK/RECORD** button to enter the '*Language*' submenu.
3. Press the **LEFT** or **RIGHT** buttons to navigate the submenu and select a language. You can select from several different languages.
4. Press the **OK/RECORD** button to confirm your selected language.
5. Press the **MODE** button to exit the submenu without making a selection.

4.3.6 Date/Time

This setting allows you to set a date and time for display on videos and photos.

1. In VIDEO or PHOTO modes, press and hold the **MODE** button to access the settings menu. Then press the **MODE** button again to access the Setup mode settings.
2. Press the **OK/RECORD** button to enter the '*Date/Time*' submenu.
3. The menu is presented as follows:
Date: YYYY / MM / DD

Time: HH:MM:SS (the time can only be displayed in a 24-hour format)

4. Press the **LEFT** or **RIGHT** buttons to change the highlighted. When you are satisfied with the highlighted value, press the **OK/RECORD** button to confirm that value and proceed to the next value.
5. Once you are completed, press the **MODE** button to save your setting and exit.
6. Press the **MODE** button to exit the submenu without making a selection.

4.3.7 WIFI

This function allows you activate the WIFI on the camcorder.

1. In VIDEO mode, press and hold the **MODE** button to access the settings menu. Then press the **MODE** button again to access the Setup mode settings.
2. Select '*WIFI*' by using the **LEFT** or **RIGHT** buttons. Press the **OK/RECORD** button to enter the '*WIFI*' submenu.
3. Press the **LEFT** or **RIGHT** buttons again to navigate the submenu and select a setting. You can select from *Off* and *On*.
4. Press the **OK/RECORD** button to confirm your selected setting.
5. If you selected *On*, a QR code will show on the screen, scan the QR code to download the app, using the app will allow you to control the camcorder from your smartphone. Follow the steps in section 4.5 for more information.
6. Press the **OK/RECORD** button to exit the QR code screen.
7. Press the **MODE** button to exit the submenu without making a selection.

Please note: WIFI mode can only be activated in Video mode.

4.3.8 Format Memory Card

This setting allows you to erase all video and photo files stored on your memory card.

1. In VIDEO or PHOTO modes, press and hold the **MODE** button to access the settings menu. Then press the **MODE** button again to access the Setup mode settings.
2. Select '*Format Memory Card*' by using the **LEFT** or **RIGHT** buttons. Press the **OK/RECORD** button to enter the '*Format Memory Card*' submenu.
3. Press the **LEFT** or **RIGHT** buttons again to navigate the submenu and select a setting. You can select from *Cancel* and *OK*.
4. Press the **OK/RECORD** button to confirm your selected setting.
5. Press the **MODE** button to exit the submenu without making a selection.

NOTE: Use extreme caution when accessing this setting. There is no way to recover formatted media. Once you format your memory card, the previously stored files cannot be recovered.

4.3.9 Restore Default Settings

This setting allows you to reset all menu settings to the factory default settings. This function will not delete any media stored on your memory card.

1. In VIDEO or PHOTO modes, press and hold the **MODE** button to access the settings menu. Then press the **MODE** button again to access the Setup mode settings.
2. Select '*Restore Default Settings*' by using the **LEFT** or **RIGHT** buttons. Press the **OK/RECORD** button to enter the '*Restore Default Settings*' submenu.
3. Press the **LEFT** or **RIGHT** buttons again to navigate the submenu and select a setting. You can select from *Cancel* and *OK*.
4. Press the **OK/RECORD** button to confirm your selected setting.
5. Press the **MODE** button to exit the submenu without making a selection.

4.3.10 Version

This setting displays the current firmware version of your camcorder.

1. In VIDEO or PHOTO modes, press and hold the **MODE** button to access the settings menu. Then press the **MODE** button again to access the Setup mode settings.
2. Select '*Version*' by using the **LEFT** or **RIGHT** buttons. Press the **OK/RECORD** button to show the current firmware version.
3. Press the **OK/RECORD** button to exit the Firmware Version.
4. Press the **MODE** button to exit the submenu.

4.4 Playback Mode Settings

Overview

Before you begin, ensure you are in **PLAYBACK** mode. From the main screen, press the **MODE** button two times. The current mode will be displayed in the upper right corner of the display. To cycle through the different modes, simply press the **MODE** button again.

4.4.1 Delete

Your camcorder gives you the option of deleting your recorded video and photo files right from your camcorder.

1. In Playback modes, press and hold the **MODE** button to access the settings menu.
2. Select '*Delete*' by using the **LEFT** or **RIGHT** buttons. Press the **OK/RECORD** button to enter the '*Delete*' submenu.
3. Press the **LEFT** or **RIGHT** buttons again to navigate the submenu and select a setting.
You can select from *Delete Current* and *Delete All*.
4. Press the **OK/RECORD** button to confirm your selected setting.
5. Press the **MODE** button to exit the submenu without making a selection.

NOTE: There is no way to recover deleted media. Once you delete a single file or all files, they cannot be recovered. Only files that are locked are protected from deletion in **PLAYBACK mode.**

4.4.2 Protect

Your camcorder gives you the option of protecting your recording video and photo files right from your camcorder. This will lock your files and prevent them from being deleted in **PLAYBACK** mode.

1. In Playback modes, press and hold the **MODE** button to access the settings menu.
2. Select '*Protect*' by using the **LEFT** or **RIGHT** buttons. Press the **OK/RECORD** button to enter the '*Protect*' submenu.
3. Press the **LEFT** or **RIGHT** buttons again to navigate the submenu and select a setting.
You can select from *Lock Current*, *Unlock Current*, *Lock All* and *Unlock All*.
4. Press the **OK/RECORD** button to confirm your selected setting.
5. Press the **MODE** button to exit the submenu without making a selection.

4.4.3 Slide Show

Photographs can be viewed as a slideshow on the camcorder.

1. In Playback modes, press and hold the **MODE** button to access the settings menu.
2. Select '*Slide Show*' by using the **LEFT** or **RIGHT** buttons. Press the **OK/RECORD** button to enter the '*Slide Show*' submenu.

3. Press the **LEFT** or **RIGHT** buttons again to navigate the submenu and select a setting.
You can select from *2 Seconds*, *5 Seconds* and *8 Seconds*.
4. Press the **OK/RECORD** button to confirm your selected setting.
5. Press and hold the **MODE** button to end the slide show.
6. Press the **MODE** button to exit the submenu without making a selection.

4.5 Wireless Connectivity

4.5.1 Connecting to the Viidure App

To wirelessly operate the MNCD200NW car camcorder you will need to install the “Viidure” app on your Android or iOS device. To download the app, search for “Viidure” in the Apple App Store or Google Play Store. You can also scan the QR code below to find the app.

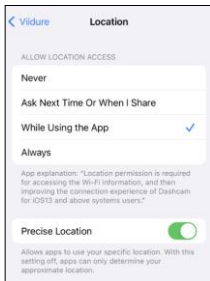


The camcorder can be operated remotely by following the steps below:

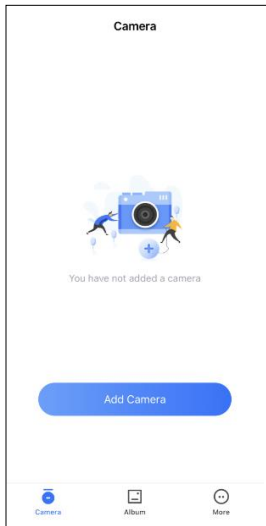
1. In VIDEO mode, press and hold the **MODE** button to access the settings menu. Then press the **MODE** button again to access the Setup mode settings.
2. Select '*WIFI*' by using the **LEFT** or **RIGHT** buttons. Press the **OK/RECORD** button to enter the '*WIFI*' submenu.
3. Press the **LEFT** or **RIGHT** buttons again to navigate the submenu and select the *On* option and press the **OK/RECORD** button.
4. A QR code will show on the screen, scan the QR code to download the app, after scanning the QR code, press the **OK/RECORD** button to exit the QR code screen.
5. Press the **MODE** button to exit the setup mode.
6. The Network Name (SSID) and the password will be displayed on the screen.
7. Open your phone's wireless menu, turn all wireless settings on and connect to the network named "MNCD200NW" then join the network, password is 12345678.
8. Exit the wireless menu on your smartphone and open the "Viidure" app to launch remote operation of the camcorder.
9. Once connected successfully, launch the Viidure app. When launching the app for the first time, you will be prompted to allow the Viidure app to use your location.
10. Select "Allow While Using App" or "Allow Always". This will allow the app to communicate with your camcorder and will allow the app to work properly. The app

will not connect to your camcorder if you select "Don't Allow".

11. As part of the iOS operating system, your smartphone's Location Settings must be enabled in order to allow proper communication between your smartphone and your Minolta camcorder. Selecting "Don't Allow" will prevent your camcorder from connecting to the Viidure app.
12. If you selected "Don't Allow", then you can change this setting by going into your iOS Settings, selecting the Viidure app, selecting the Location settings and select "While Using App".

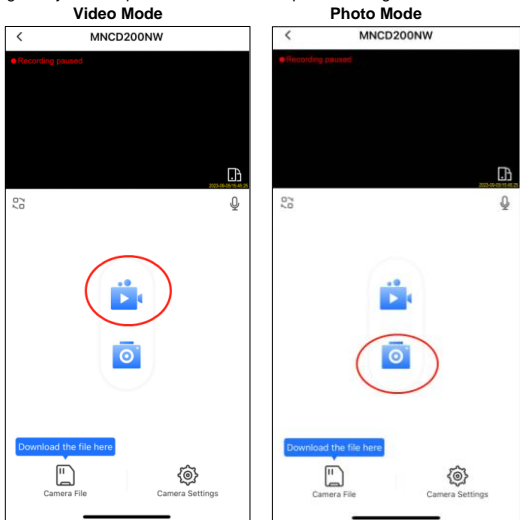


13. Then, tap "Add Camera" to connect to the camcorder.



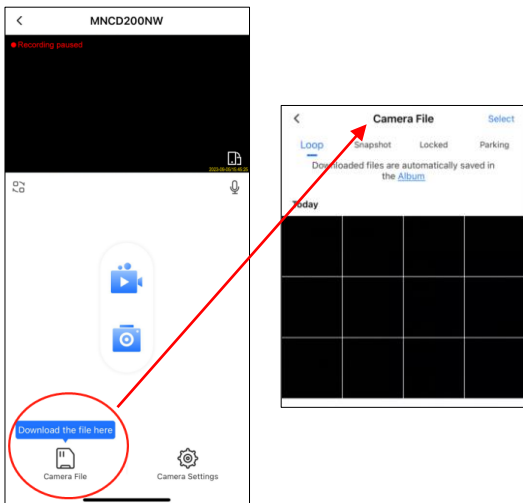
4.5.2 Operating the Viidure App

Your MNCD200NW will now be operable via your smartphone. The camcorder will automatically start recording when first connected to the app. Tap the camcorder icon with the pause symbol in it to stop recording. Tap that icon to start and stop recording at any time. Tap the camera icon to capture an image.



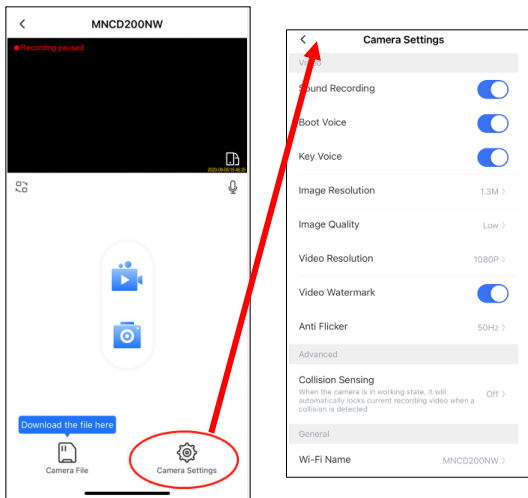
4.5.3 Viewing Media on the App

1. To view the recorded images and videos stored on the memory card on the app, tap “Camera File” located at the bottom left corner of your smartphone’s screen.
2. All of the different media saved to the memory card can be found here. Tap the photo or video file you wish to view. From this screen media can be saved to your smartphone and deleted. If a photo or video is deleted on the app, it will also be removed from the memory card in the camcorder.
3. Downloaded media can be found in the “Album” section of the app. From the Album, downloaded files can be saved directly to your smartphone.



4.5.4 Changing Camcorder Settings on the App

Certain camcorder settings can also be changed on the app. Press the gear icon located at the bottom right corner of your smartphone's screen to launch the settings menu.



5. TECHNICAL SPECIFICATIONS

Model Number	MNCD200NW
LCD Display Screen	2.0 Inch LCD Screen
Field of View	Front Lens – Super wide angle; 110 Degrees In-Car Lens – 90 Degrees, Tilt Adjustable Lens
Video Resolution	Front Lens – 1080P, 720P, VGA Interior Lens – 720P
Photo Resolutions	12 Mega Pixels; 10 Mega Pixels; 8 Mega Pixels; 5 Mega Pixels; 3 Mega Pixels; 2 Mega Pixels; 1 Mega Pixels; VGA;
File Format	Picture: JPEG, Video: AVI
Night Vision Assist	Infrared LED (4x) for Interior lens
Loop Recording	Support
Collision Auto Recording	Support
Wide Dynamic Range	Support
WIFI with App Integration	Support for iOS and Android
Time & Date Stamp	Support
External Storage	MicroSD, MicroSDHC, MicroSDXC Card (32GB max.) – Class 10 Recommended
Languages	English, French, Simplified Chinese, Traditional Chinese, Korean, Japanese
USB Function	USB 2.0 for Power Input and PC Mass Storage Mode
Microphone and Speaker	Built-in
Backup Power	Built-in Supercapacitor for Backup Power Source (no battery)



MINOLTA®

Minolta is a registered trademark of JMM Lee Properties, LLC and is used in the United States by Elite Brands Inc. under license.
40 Wall Street, 61st Floor, New York, NY 10005 USA • Tel: 800-441-1100
www.minoltadigital.com • www.elitebrands.com
Copyright © 2023 Elite Brands Inc.



MINOLTA®

MNCD200NW
Dash Cam